



## GAMMA KIT



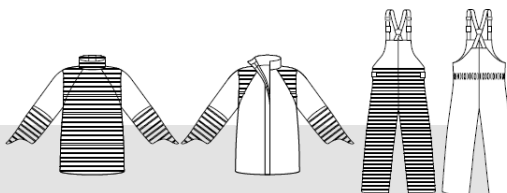
## GAMMA KIT

BEST  
SELLER

- JACKET
- TROUSER

- Full front water jet protection as well as round the neck, shoulders, and the entire area round the forearm.
- Ventilation is an option. *Read more on page 91.*
- A great choice for jobs that require movement.
- Add Head Protection, Protective Gloves and Boots or Gaiters and you are protected from head to toe.
- CE Regulation (EU) 2016/425

STRIPED AREAS ARE PROTECTED



SINGLE 1 000 BAR / 15 000 PSI



ROTOR 2 800 BAR / 40 000 PSI

SIZES	WEIGHT	ART. NO.
S/M-4XL/5XL	4.3 kg (SIZE L/XL)	51K3047 5000